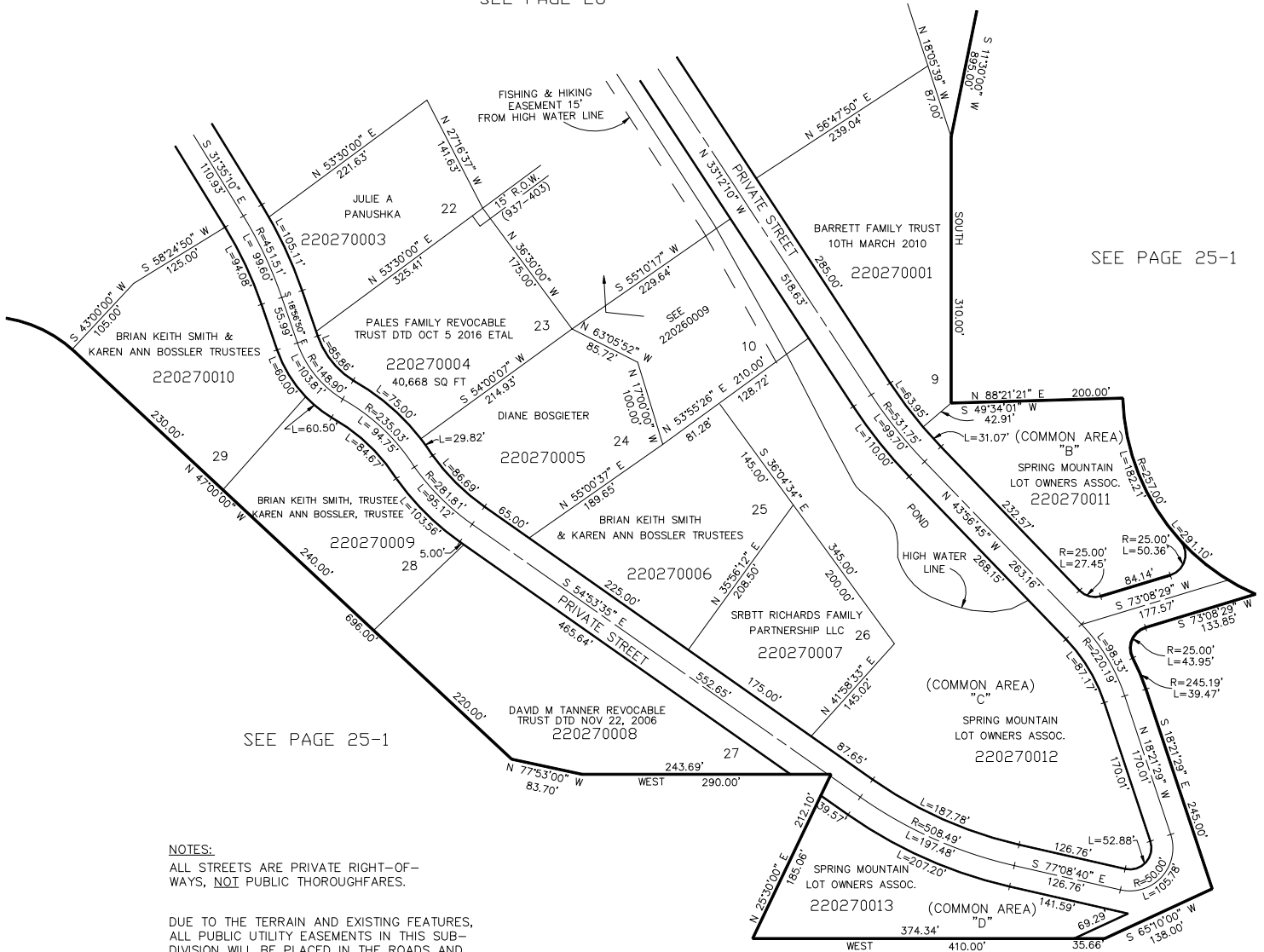


PART OF THE SOUTH 1/2, OF SEC. 19, T.7N., R.1E., S.L.B. & M.  
**SPRING MOUNTAIN RANCHETTES**

LISTS 9, 10, 22-29, B, C, & D  
 LIBERTY DISTRICT  
 SCALE 1" = 100'

TAXING UNIT: 36

SEE PAGE 26



**NOTES:**  
 ALL STREETS ARE PRIVATE RIGHT-OF-WAYS, NOT PUBLIC THOROUGHFARES.

DUE TO THE TERRAIN AND EXISTING FEATURES, ALL PUBLIC UTILITY EASEMENTS IN THIS SUBDIVISION WILL BE PLACED IN THE ROADS AND THROUGH LOTS AT THE DISCRETION OF THE UTILITY COMPANIES WITH APPROVAL OF THE LOT OWNER ASSOCIATION.

WEBER COUNTY IS GRANTED AN OPEN SPACE EASEMENT ON AND OVER THE COMMON SPACE AREAS OF WHICH THE GENERAL PUBLIC DOES NOT HAVE RIGHT OF ACCESS.

FOR COMPLETE ENG DATA SEE ORIGINAL DEDICATION PLAT IN BOOK 15, PAGES 75 & 76 OF RECORDS.

SEE PAGE 25-1